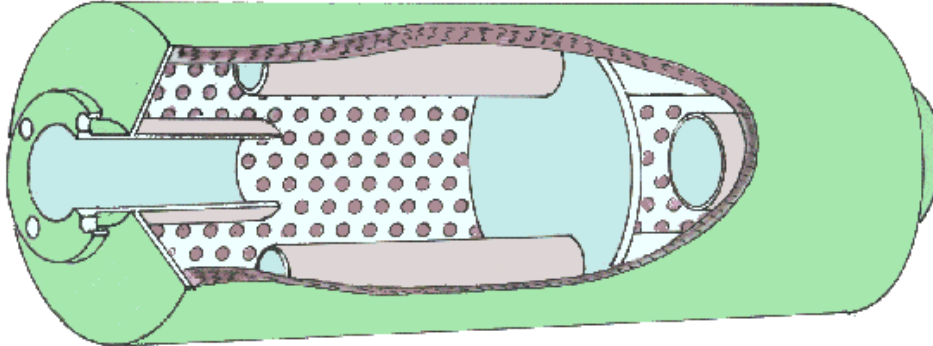


SN126 "Maximum Attenuation" Silencer

If you have any questions relating to this or any of our products, please do not hesitate to contact us.

General Specification



These silencers are recommended for use on diesel exhaust gas lines where noise levels have to meet the most critical specifications, without creating excessive back pressure. They are designed using the well known reactive and absorptive principles and the unique configuration combination combines these together to produce the most effective attenuation over a wide band. The design gives low noise breakout and surface temperatures. Use the attenuation and mass flow / resistance graphs to select the optimum size for the required gas flow.

Construction

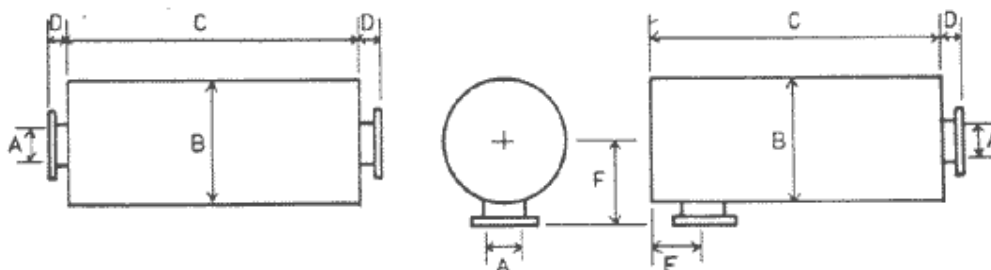
A cylindrical shell manufactured from heavy gauge sheet steel, fully welded. All plates are manufactured from flat plate.

End Connectors

Unless otherwise specified, screwed BSP connectors will be supplied on 50mm - 76mm (2" -3") silencers and flanges to BS10 (Table D) on all larger sizes. Flanges to other standards can be supplied on special quotation.

Side Entry Silencers

If these are required, please specify SN 126(SE) when ordering.



UAI - SERVAIS SILENCERS, FORDHOUSE ROAD, BUSBURY, WOLVERHAMTON WV10 9DZ
Telephone: +44 (0) 1902 307799 Fax: +44 (0) 1902 721026

SN126 "Maximum Attenuation" Silencer

Nominal Bore (A)	Diameter (B)	Length (C)	(D)	(E)	(F)	Approx. weight (kilos)
50 (2")	305 (12")	813 (32")	38	76	203	30
64 (2½")	305 (12")	914 (36")	28	89	229	40
76 (3")	356 (14")	1000 (39")	50	102	279	48
89 (3½")	457 (18")	1219 (48")	76	102	305	70
100 (4")	559 (22")	1219 (48")	76	127	356	80
125 (5")	610 (24")	1473 (58")	76	152	381	128
150 (6")	660 (26")	1676 (66")	76	165	406	150
200 (8")	762 (30")	2000 (79")	76	190	457	250
250 (10")	914 (36")	2438 (96")	89	229	546	450
300 (12")	1067 (42")	2819 (111")	89	254	622	750
350 (14")	1067 (42")	3048 (120")	89	292	622	800
400 (16")	1219 (48")	3581 (141")	89	318	700	1150
450 (18")	1372 (54")	3962 (156")	102	343	787	
500 (20")	1524 (60")	4343 (171")	102	381	864	

Note (i) Dimensions in millimetres

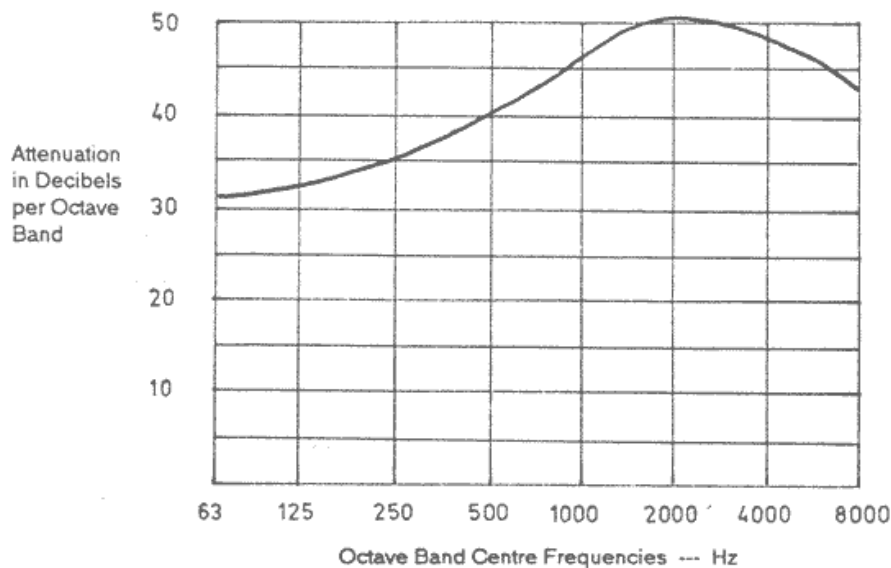
(ii) Dimension 'E' is a minimum distance

UAI - SERVAIS SILENCERS, FORDHOUSE ROAD, BUSBURY, WOLVERHAMTON WV10 9DZ
 Telephone: +44 (0) 1902 307799 Fax: +44 (0) 1902 721026

www.servais.co.uk

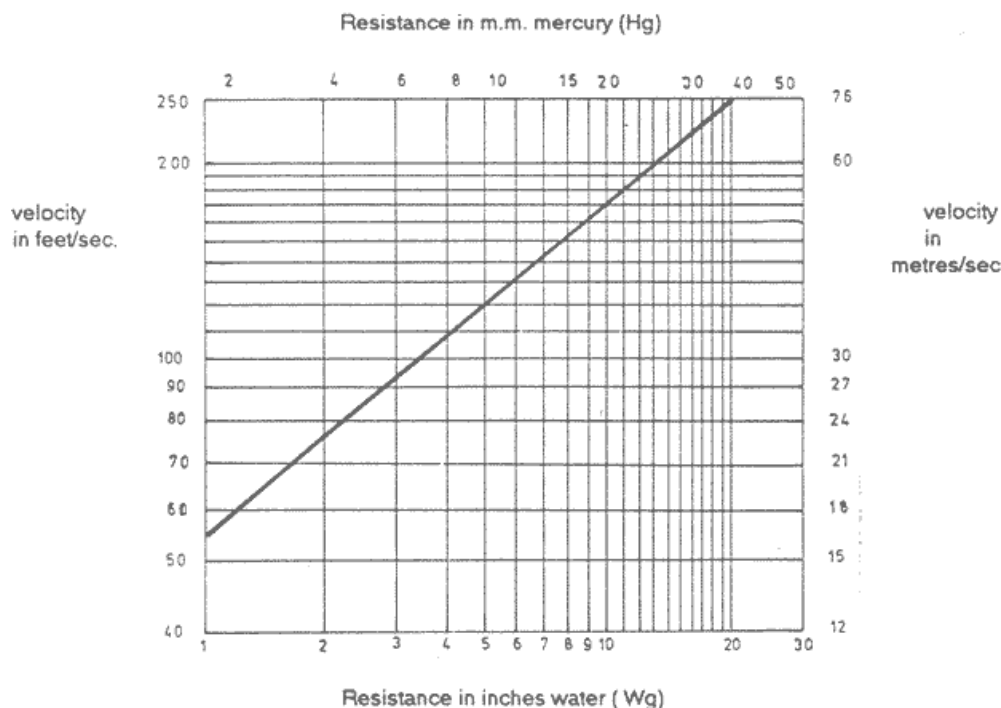
SN126 "Maximum Attenuation" Silencer

Typical Noise Attenuation Graph



The above graph is based on simplified theoretical considerations and extrapolated from various noise tests. The actual noise reduction obtained on any particular installation will depend upon the power and type of the noise source, the local environment and the selection of the correct size of silencer for that engine.

Velocity / Resistance Graph



This graph is based on simplified theoretical considerations and is issued as a guide. The actual resistance experienced will depend on a number of factors affecting the individual installation.

If you have any questions relating to this or any of our products, please do not hesitate to contact us.

UAI - SERVAIS SILENCERS, FORDHOUSE ROAD, BUSBURY, WOLVERHAMTON WV10 9DZ
Telephone: +44 (0) 1902 307799 Fax: +44 (0) 1902 721026