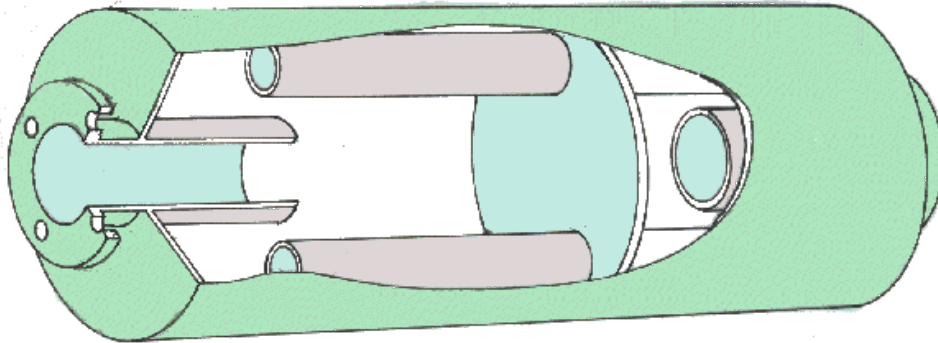


## SN122 "Multipath" or "Reactive" Residential Duty Silencer

If you have any questions relating to this or any of our products, please do not hesitate to contact us.

### General Specification



These silencers are designed on the reactive principle with twin chambers in which the exhaust gases are mixed and smoothed, thus absorbing a high proportion of the acoustic energy without causing excessive back pressure. They can also be used as a primary silencer in a multi silencer system.

### Construction

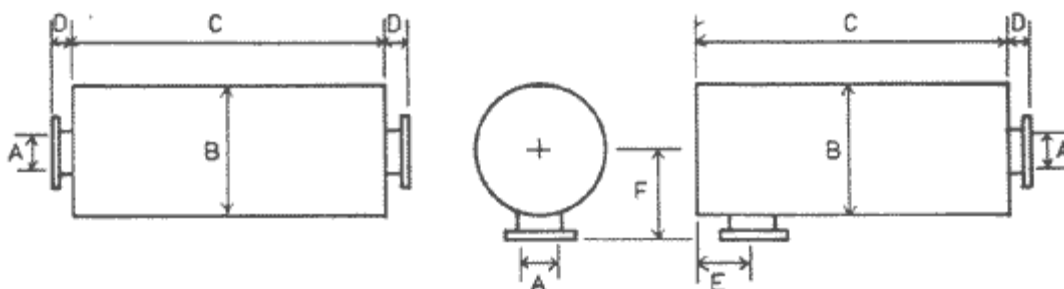
A cylindrical shell manufactured from heavy gauge sheet steel, fully welded. The end plates on 50 - 76mm nominal bore (2"-3") are from heavy steel pressings and for larger sizes these are manufactured from flat plate.

### End Connectors

Unless otherwise specified, screwed BSP connectors will be supplied on 50mm - 76mm (2" -3") silencers and flanges to BS10 (Table D) on all larger sizes. Flanges to other standards can be supplied on special quotation.

### Side Entry Silencers

If these are required, please specify SN 122(SE) when ordering.



UAI - SERVAIS SILENCERS, FORDHOUSE ROAD, BUSBURY, WOLVERHAMTON WV10 9DZ  
Telephone: +44 (0) 1902 307799 Fax: +44 (0) 1902 721026

## SN122 "Multipath" or "Reactive" Residential Duty Silencer

Nominal Bore (A)	Diameter (B)	Length (C)	(D)	(E)	(F)	Approx. weight (kilos)
38 (1½")	200 (8")	685 (27")		53		14
50 (2")	254 (10")	813 (32")		63		16
64 (2½")	305 (12")	914 (46")		76		22
76 (3")	355 (14")	1000 (39")		102		30
89 (3½")	406 (16")	1000 (39")	76	127	279	43
100 (4")	406 (16")	1219 (48")	76	127	279	47
125 (5")	457 (18")	1473 (58")	76	152	305	65
150 (6")	559 (22")	1676 (66")	76	165	356	90
200 (8")	660 (26")	1981 (78")	76	190	406	140
250 (10")	762 (30")	2438 (96")	89	229	470	260
300 (12")	914 (36")	2819 (111")	89	254	546	450
350 (14")	1000 (40")	3048 (120")	89	292	597	550
400 (16")	1168 (46")	3581 (141")	89	318	673	800
450 (18")	1270 (50")	3962 (156")	102	343	737	1000
500 (20")	1372 (54")	4343 (171")	102	381	787	1200
550 (22")	1524 (60")	4724 (186")	152	325	914	1580
600 (24")	1676 (66")	5000 (197")	152	350	990	2000

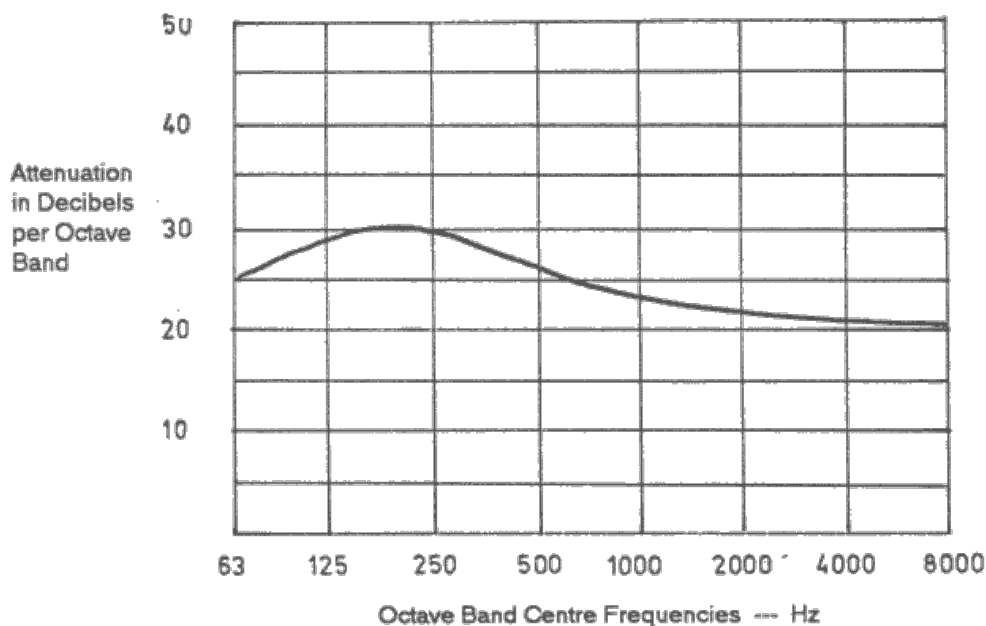
Note (i) Dimensions in millimetres  
(ii) BSP Drain plug fitted at inlet end  
(iii) Dimension 'E' is a minimum distance

UAI - SERVAIS SILENCERS, FORDHOUSE ROAD, BUSBURY, WOLVERHAMTON WV10 9DZ  
Telephone: +44 (0) 1902 307799 Fax: +44 (0) 1902 721026

[www.servais.co.uk](http://www.servais.co.uk)

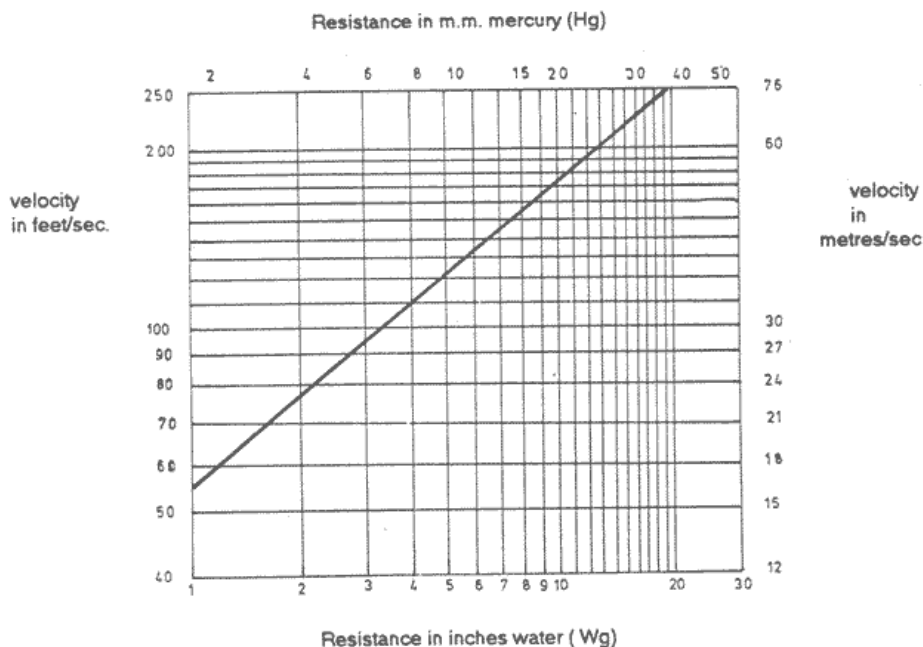
# SN122 "Multipath" or "Reactive" Residential Duty Silencer

## Typical Noise Attenuation Graph



The above graph is based on simplified theoretical considerations and extrapolated from various noise tests. The actual noise reduction obtained on any particular installation will depend upon the power and type of the noise source, the local environment and the selection of the correct size of silencer for that engine.

## Velocity / Resistance Graph



This graph is based on simplified theoretical considerations and is issued as a guide. The actual resistance experienced will depend on a number of factors affecting the individual installation.

If you have any questions relating to this or any of our products, please do not hesitate to contact us.

UAI - SERVAIS SILENCERS, FORDHOUSE ROAD, BUSBURY, WOLVERHAMTON WV10 9DZ  
Telephone: +44 (0) 1902 307799 Fax: +44 (0) 1902 721026