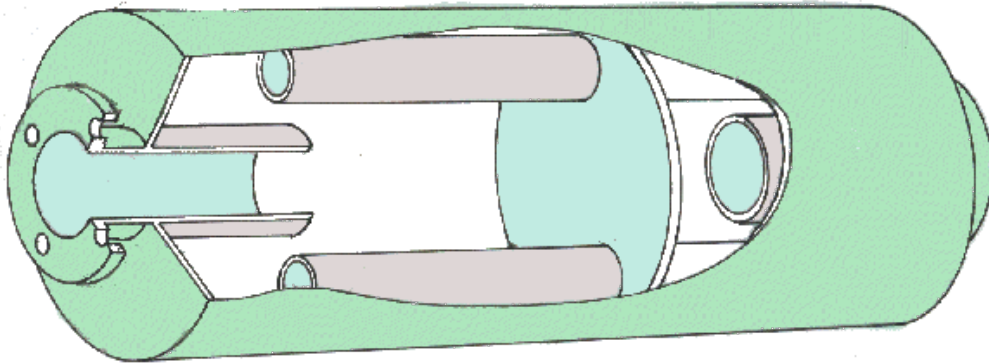


## SN121 "Multipath" or "Reactive" Medium Duty Silencer

If you have any questions relating to this or any of our products, please do not hesitate to contact us.

### General Specification



These silencers are designed on the reactive principle with twin chambers in which the exhaust gases are mixed and smoothed, thus absorbing a high proportion of the acoustic energy without causing excessive back pressure.

### Construction

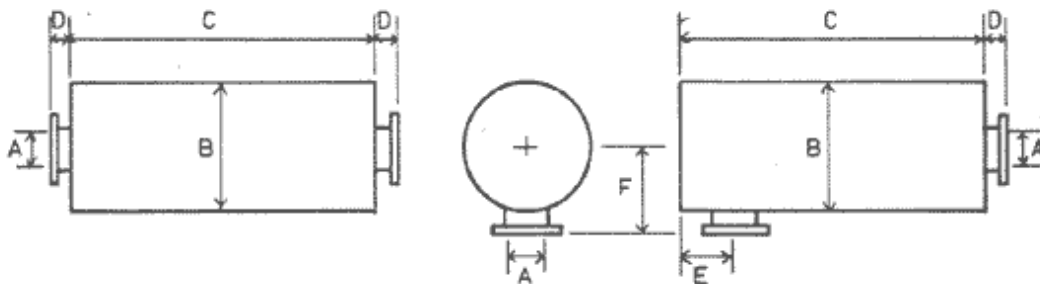
A cylindrical shell manufactured from heavy gauge sheet steel, fully welded. The end plates on 50 - 76mm nominal bore (2"-3") are from heavy steel pressings and for larger sizes these are manufactured from flat plate.

### End Connectors

Unless otherwise specified, screwed BSP connectors will be supplied on 50mm - 76mm (2" -3") silencers and flanges to BS10 (Table D) on all larger sizes. Flanges to other standards can be supplied on special quotation.

### Side Entry Silencers

If these are required, please specify SN 121(SE) when ordering.



UAI - SERVAIS SILENCERS, FORDHOUSE ROAD, BUSBURY, WOLVERHAMTON WV10 9DZ  
Telephone: +44 (0) 1902 307799 Fax: +44 (0) 1902 721026

[www.servais.co.uk](http://www.servais.co.uk)

## SN121 "Multipath" or "Reactive" Medium Duty Silencer

Nominal Bore (A)	Diameter (B)	Length (C)	(D)	(E)	(F)	Approx. weight (kilos)
50 (2")	250 (10")	711 (28")		63		10
64 (2½")	305 (12")	813 (32")		76		12
76 (3")	305 (12")	914 (36")		102		18
89 (3½")	356 (14")	914 (36")	76	127	254	28
100 (4")	356 (14")	1067 (42")	76	127	254	32
125 (5")	406 (16")	1245 (49")	76	152	279	48
150 (6")	457 (18")	1448 (57")	76	165	305	64
200 (8")	559 (22")	1778 (70")	76	190	356	95
250 (10")	660 (26")	2134 (84")	89	229	419	150
300 (12")	762 (30")	2591 (102")	89	254	470	270
350 (14")	914 (36")	2794 (110")	89	292	546	450
400 (16")	1000 (39")	3124 (123")	89	318	597	560
450 (18")	1168 (46")	3480 (137")	102	343	686	800
500 (20")	1270 (50")	3810 (150")	102	381	737	1000
550 (22")	1372 (54")	4140 (163")	152	325	838	1220
600 (24")	1473 (58")	4420 (174")	152	350	888	1560

Note (i) Dimensions in millimetres

(ii) BSP Drain plug fitted at inlet end

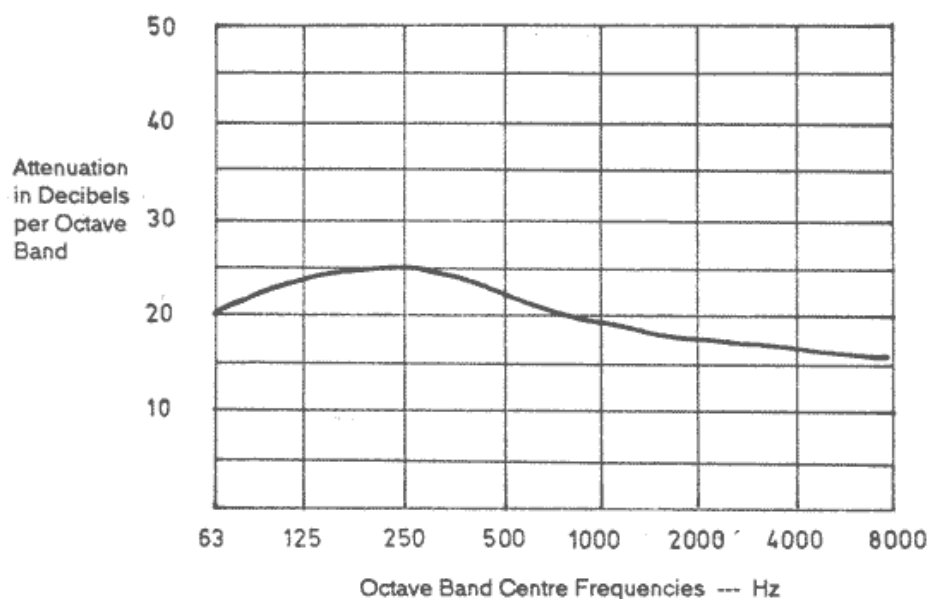
(iii) Dimension 'E' is a minimum distance

UAI - SERVAIS SILENCERS, FORDHOUSE ROAD, BUSBURY, WOLVERHAMTON WV10 9DZ  
Telephone: +44 (0) 1902 307799 Fax: +44 (0) 1902 721026

[www.servais.co.uk](http://www.servais.co.uk)

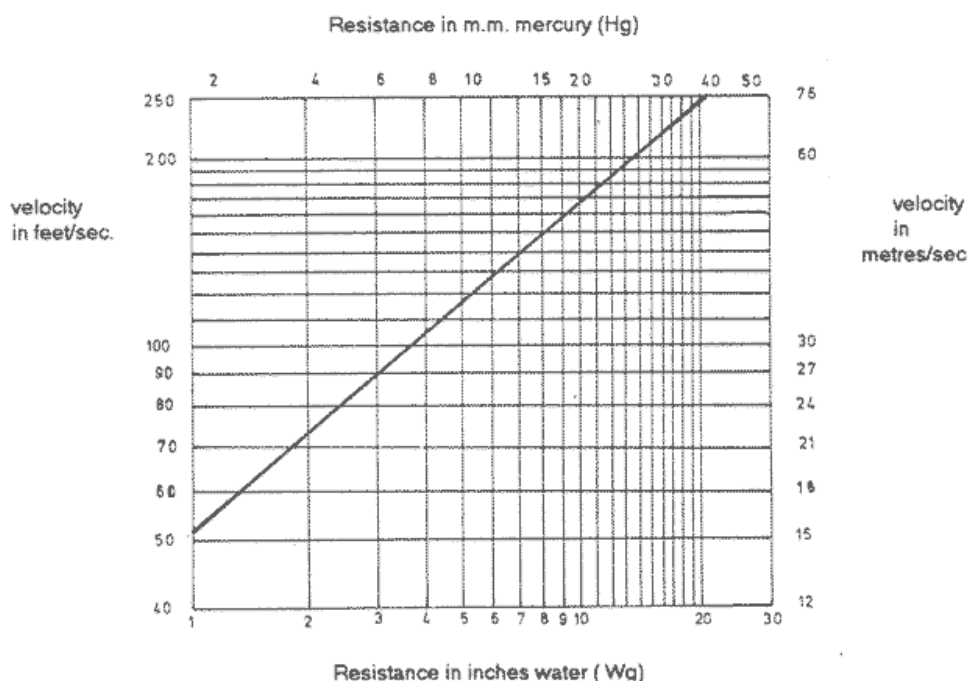
# SN121 "Multipath" or "Reactive" Medium Duty Silencer

## Typical Noise Attenuation Graph



The above graph is based on simplified theoretical considerations and extrapolated from various noise tests. The actual noise reduction obtained on any particular installation will depend upon the power and type of the noise source, the local environment and the selection of the correct size of silencer for that engine.

## Velocity / Resistance Graph



This graph is based on simplified theoretical considerations and is issued as a guide. The actual resistance experienced will depend on a number of factors affecting the individual installation.

If you have any questions relating to this or any of our products, please do not hesitate to contact us.

UAI - SERVAIS SILENCERS, FORDHOUSE ROAD, BUSBURY, WOLVERHAMTON WV10 9DZ  
Telephone: +44 (0) 1902 307799 Fax: +44 (0) 1902 721026