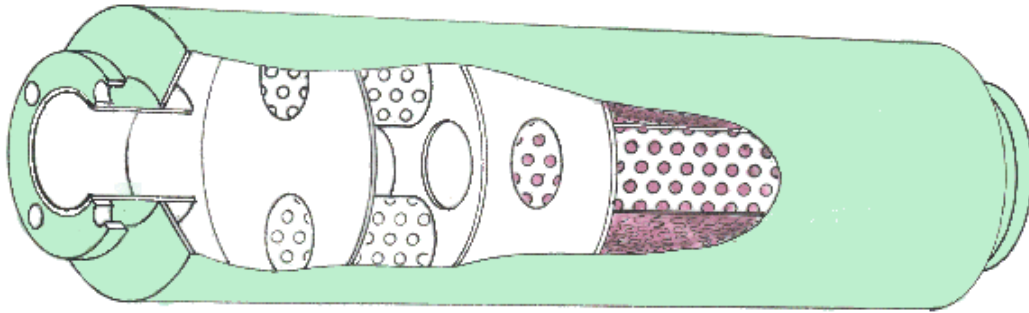


SN114 "Residential" Type Silencer

If you have any questions relating to this or any of our products, please do not hesitate to contact us.

General Specification



These silencers incorporate an expansion and multi pass section to attenuate the lower frequency sounds and a sound absorption section to attenuate the higher frequency sounds.

Construction

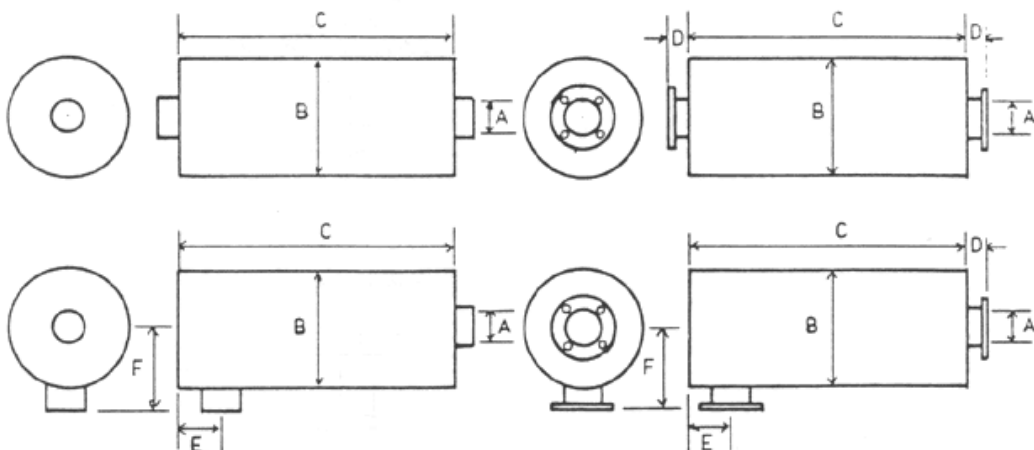
A cylindrical steel body with all welded seams. End plates for sizes 25mm - 76mm nominal bore (1" - 3") from heavy steel pressings and for larger sizes manufactured from flat plate.

End Connectors

Unless otherwise specified, screwed BSP connectors will be supplied on 25mm - 76mm (1" - 3") silencers and flanges to BS10 (Table D) on all larger sizes. Flanges to ASA, 4504, DIN or other standards can be supplied on special quotation.

Side Entry Silencers

If these are required, please specify SN114 (SE) when ordering.



UAI - SERVAIS SILENCERS, FORDHOUSE ROAD, BUSBURY, WOLVERHAMTON WV10 9DZ
Telephone: +44 (0) 1902 307799 Fax: +44 (0) 1902 721026

SN114 "Residential" Type Silencer

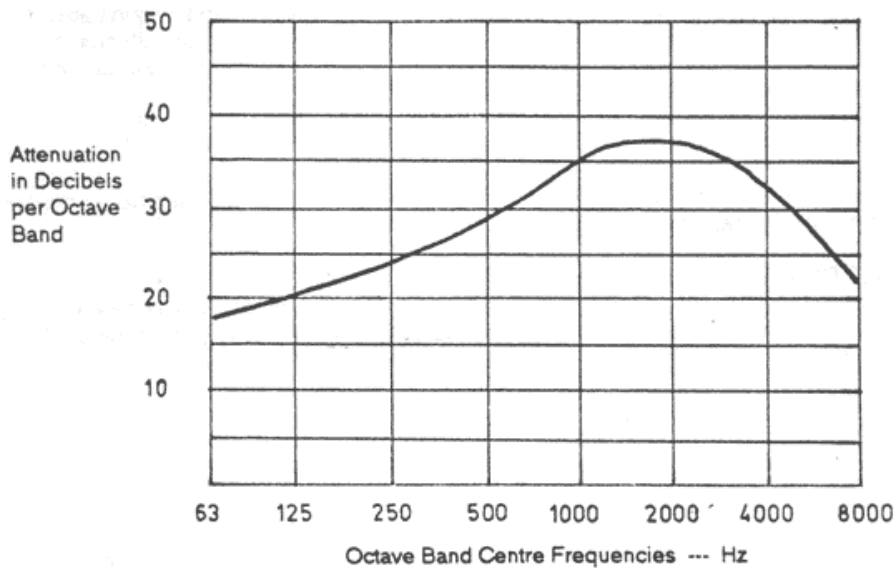
Nominal Bore (A)	Diameter (B)	Length (C)	(D)	(E)	(F)	Approx. weight Kilos
25 (1")	121 (4¾")	470 (18½")		38		3
32 (1¼")	121 (4¾")	470 (18½")		38		3
38 (1½")	121 (4¾")	470 (18½")		50	98	3
50 (2")	140 (5½")	635 (25")		50	121	5
64 (2½")	178 (7")	749 (29½")		50	140	7
76 (3")	203 (8")	876 (34½")		63	152	14
89 (3½")	254 (10")	914 (36")	50	75	190	28
100 (4")	279 (11")	1054 (41½")	50	75	216	34
125 (5")	356 (14")	1054 (41½")	50	83	254	54
150 (6")	406 (16")	1219 (48")	76	95	279	73
200 (8")	508 (20")	1676 (66")	76	127	356	152
250 (10")	610 (24")	2134 (84")	76	152	406	245
300 (12")	762 (30")	2743 (108")	102	203	533	363

Note: (i) Dimensions in millimetres.

(ii) B.S.P. Drain plug at inlet end is available as an optional extra.

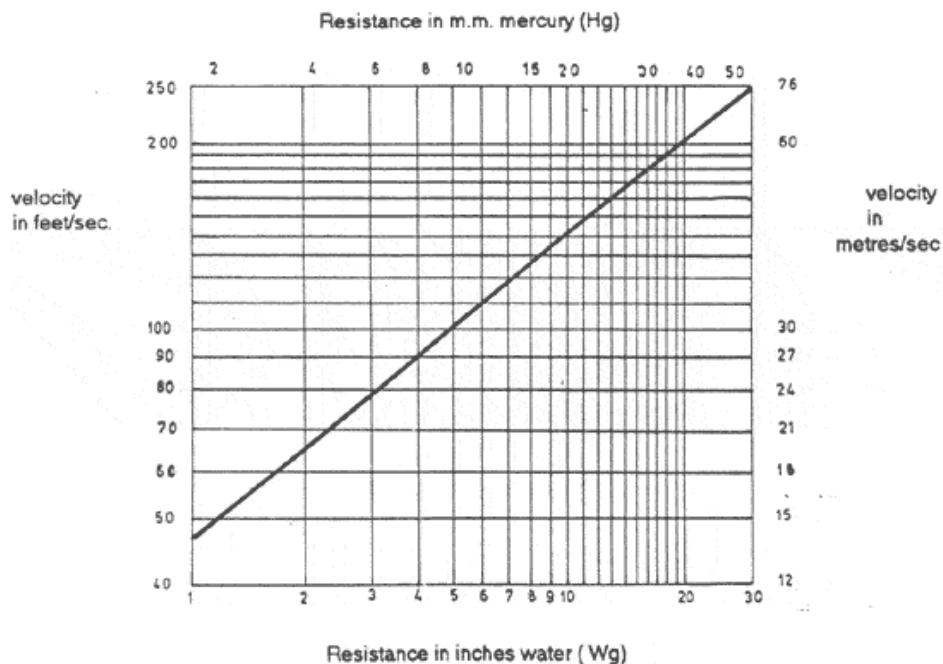
SN114 "Residential" Type Silencer

Typical Noise Attenuation Graph



The above graph is based on simplified theoretical considerations and extrapolated from various noise tests. The actual noise reduction obtained on any particular installation will depend upon the power and type of the noise source, the local environment and the selection of the correct size of silencer for that engine.

Velocity / Resistance Graph



This graph is based on simplified theoretical considerations and is issued as a guide. The actual resistance experienced will depend on a number of factors affecting the individual installation.

If you have any questions relating to this or any of our products, please do not hesitate to contact us.

UAI - SERVAIS SILENCERS, FORDHOUSE ROAD, BUSBURY, WOLVERHAMTON WV10 9DZ
Telephone: +44 (0) 1902 307799 Fax: +44 (0) 1902 721026